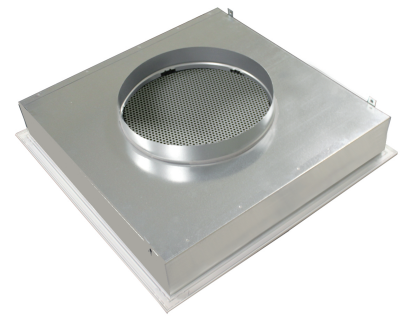


**PPRMB  
(RAL9010) new**

- Perforated ceiling grilles
- For air exhaust
- Steel
- White, RAL 9010



## Perforated ceiling grilles for air exhaust type PPRMB (RAL9010) new

Air exhaust ceiling diffusers with removable perforated plate

**Application**

- For air exhaust in ventilation and air conditioning systems

**Material**

- Steel

**Colour**

- White, RAL 9010

**Composition**

- Perforated removable front plate with incorporated top entry plenum box

**Text for tender**

- The square air exhaust ceiling diffusers have a perforated front plate and an incorporated plenum box. They are made of steel and finished in white powder coating RAL 9010.
- **Cairox** type **PPRMB**

**Other available products**

- For **PPRMB 315** see **PS/PPRMB 315**

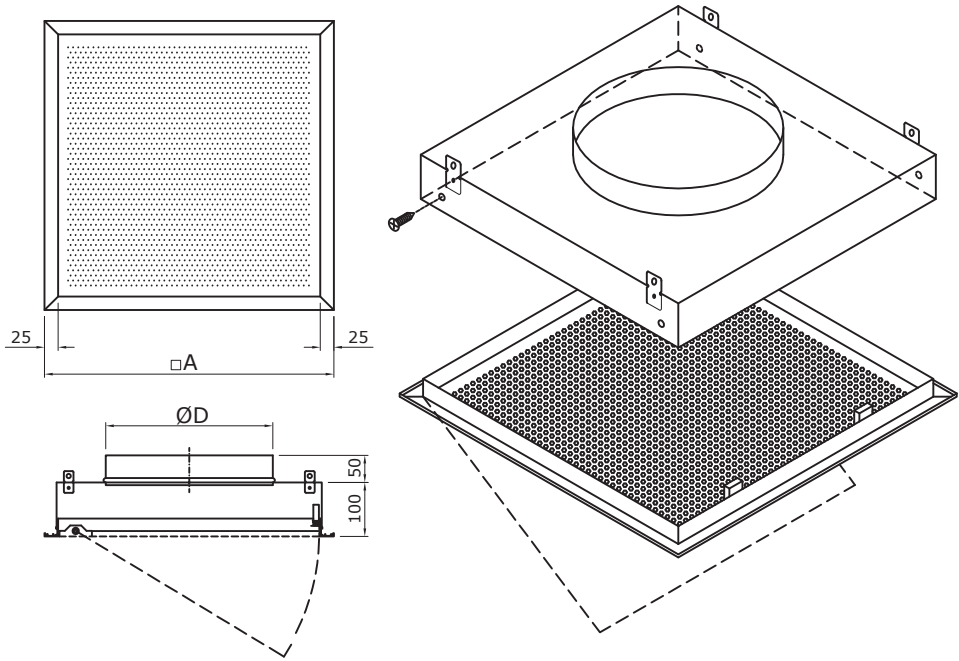
**Order example**

- **PPRMB, 200**

Explanation

**PPRMB** = Diffuser type

**200** = Diffuser size (connection diameter)



PPRMB	Dimensions	
	A [mm]	ØD [mm]
	160	300
	200	400
250	500	250

Type PPRMB		Quick selection		
		300/160	400/200	500/250
150	Q	0.0302	0.0591	0.0976
	Ak	1.4	0.7	
	Vk	18	4	
	Ps	<20	<20	
200	Lw(A)	1.8	0.9	0.6
	Vk	29	7	3
	Ps	<20	<20	<20
	Lw(A)	2.3	1.2	0.7
250	Vk	47	13	4
	Ps	24	<20	<20
	Lw(A)	2.8	1.4	0.9
	Vk	70	18	7
300	Ps	30	<20	<20
	Lw(A)	1.9	1.1	1.1
400	Vk	32	11	11
	Ps	<20	<20	<20
	Lw(A)	2.4	1.4	1.4
	Vk	52	18	18
500	Ps	27	<20	<20
	Lw(A)	2.8	1.7	1.7
600	Vk	70	26	26
	Ps	33	<20	<20
	Lw(A)		2.3	2.3
800	Vk		47	47
	Ps		28	28
	Lw(A)		2.8	2.8
1000	Vk		70	70
	Ps		35	35
	Lw(A)			

Symbols and specifications

- Q = Air Volume in m³/h
- Ak = Effective surface (free area) in m²
- Vk = Average effective velocity through the grill in m/s
- Ps = Static pressure loss given in Pa
- Lw(A) = Acoustic power in dB(A)
- The values are given for isothermal supply air
- For all special requirements, please contact our engineering office.