

Aluminium roof hoods type CTE

Aesthetic roof passage for air supply or exhaust of ventilation systems through flat roof surfaces

Brand

- Cairox

Application

- For air supply or exhaust of ventilation systems through flat roof surfaces

Material

- Roof passage made out of anodized aluminium extruded profiles and roof

Colour

- Other RAL colours available upon request, except metallised paint

Composition

- Passage mounted on mounting curb from extruded aluminum
- The fins are spaced from extruded aluminum and weatherproof
- Bird netting mounted behind the fins
- Removable roof of the roof structure consists of steel
- Eyebolts ensure the removal of the roof and lifting the roof cap

Mounting

- To be mounted on flat roofs and to be made waterresistance

Accessories

- multi-leaf valve
- Predrilled mounting holes

Text for tender

The ventilation passage is done by the flat roof by means of a roof structure with lamellae. The roof caps are made of extruded aluminum profile and roof. The turret is equipped with a removable roof panel through eyebolts. The roof and roof terminal can be painted in RAL of your choice. The roof caps can be used for both supply air and exhaust air in case of mechanical ventilation.

- CAI CAIROX BELGIUM ROX BELGIUM type CTE

Order example

■ CTE, 500 X 500 LXB, H=500

Explanation

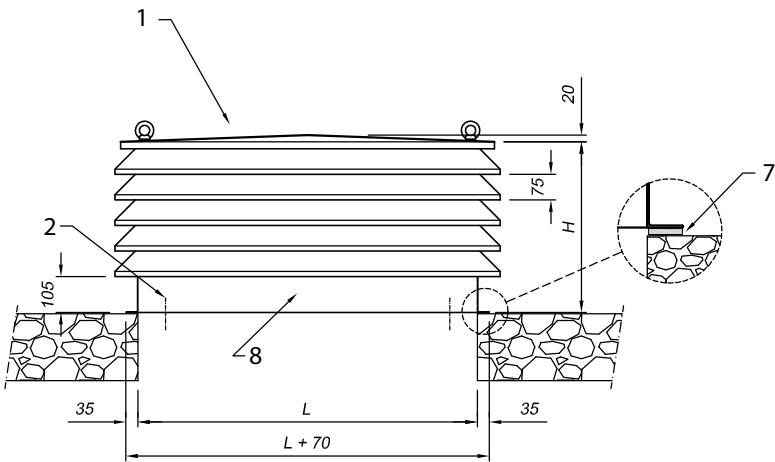
CTE = Type roof hood

500 X 500 LXB = Size lengthh and width according drawing

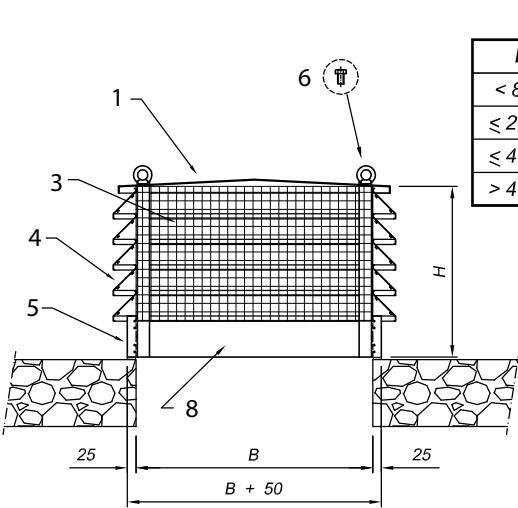
H=500 = Height according drawing

option

RAL 9006 = Finish



L	B
≤ 5.500	≤ 2.000
> 400	



L	Nº
< 800	2
≤ 2000	4
≤ 4000	6
> 4000	8