

Motorized circular fire dampers EI120S type CR2+ONE-T

Motorized circular fire dampers with a fire resistance of 120 Minutes. When the temperature in the damper rises above 72 °C the damper will close. When closed, the expanding material around the fireblade will assure a fire and air-tight seal against hot air and smoke. The tunnel is made out of galvanized steel. The **CR2 + ONE-T** fire dampers have a motorized operating mechanism with indication of the blade position including begin or end of range switch.

Application

- Fire compartmentation
- To close and seal off ventilation ducts in case of fire
- For air temperatures of -10°C up to temperature of fusible link
- For air with RV 0-96%
- Range of Ø355 up to Ø630 mm
- For size Ø100 upto Ø315 see type CR120

Material

- Galvanized steel

Composition

- Galvanized steel tunnel
- Fireproof blade in fibersilicate
- Intumescent strip around the valve
- Actuator ONE for all sizes

- 1. Refractory casing
- 2. Damper blade
- 3. Operating mechanism with:
 - manual rearmation option
 - blade position indicator
- 4. Sealing cold smoke
- 5. Blade bumper
- 6. Intumescent strip
- 7. Thermo-electric fuse
- 8. Rubber sealing ring

Mechanism

The spring-return actuator ONE is designed to simply operate Rf-t fire dampers of all sizes, automatically or remotely. When powered, the actuator moves the damper blade into its stand-by position. When the power is interrupted or when the temperature in the duct exceeds 72°C, the internal armed spring brings the damper blade back into its safety position. The motor can be reset manually by using a standard 9V battery. An integrated LED indicates the open or closed position of the motor. The (included) beginning and end of range switches indicate the position of the damper blade (on a controller panel).

Mounting

- To be inserted in fire resistant walls or floors according to the mounting instructions delivered with the valves
- To be connected with round air ducts
- To be electrically wired to the fire detection or building installation

Certification

- Certified according EN 1366-2
- CE-marked

Accessories

- Fire resistant plaster **BP**

Text for tender

- The fire dampers shall be of the round type with a fire resistance of 120 Minutes, certified according to EN 13501-3. They will consist of a galvanized steel tunnel and fireproof valve. The control mechanism will be automatically operated by means of an actuator and shall have a blade position indicator
- **SIG type CR2 + ONE-T**

Order example

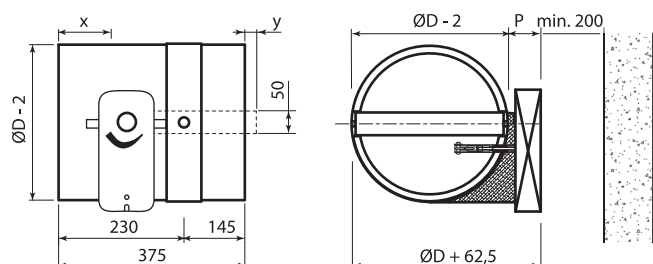
- **CR2 + ONE-T, 315**

Explanation

ONE-T= Actuator with thermostatic fuse

315 = Connection diameter

Quick selection										
øD	Ak	v	1	2	3	4	5	6	7	8
200	0.013	Q	113	226	339	452	566	679	792	905
		Vk	2.40	4.90	7.30	9.70	12.20	14.60	17.02	19.40
		Ps	4.50	17.80	40	71	111	160	218	285
		Lw(A)	30	40	46	50	53	56	58	60
250	0.025	Q	177	353	530	707	884	1060	1237	1414
		Vk	1.90	3.90	5.80	7.80	9.70	11.70	13.60	15.50
		Ps	2	10	21	38	59	86	116	152
		Lw(A)	28	38	44	49	52	55	57	59
315	0.047	Q	281	561	842	1122	1403	1683	1964	2244
		Vk	1.70	3.30	5	6.60	8.30	9.90	11.60	13.20
		Ps	1	5	12	21	33	47	64	83
		Lw(A)	27	37	43	47	50	53	55	57
355	0.064	Q	356	713	1069	1425	1782	2138	2494	2851
		Vk	1.50	3.10	4.60	6.20	7.70	9.30	10.80	12.40
		Ps	1	4	9	16	24	35	48	62
		Lw(A)	26	36	42	47	50	52	55	57
400	0.086	Q	452	905	1357	1810	2262	2714	3167	3619
		Vk	1.50	2.90	4.40	5.90	7.30	8.80	10.20	11.70
		Ps	1	3	7	12	18	26	36	46
		Lw(A)	25	36	42	46	49	52	54	56
450	0.114	Q	573	1145	1718	2290	2863	3435	4008	4580
		Vk	1.40	2.80	4.20	5.60	7	8.40	9.80	11.20
		Ps	1	2	5	9	14	20	27	35
		Lw(A)	25	35	41	45	48	51	53	55
500	0.146	Q	707	1414	2121	2827	3534	4241	4948	5655
		Vk	1.30	2.70	4	5.40	6.70	8.10	9.40	10.80
		Ps	0	2	4	7	11	16	21	28
		Lw(A)	24	34	40	45	48	51	53	55
560	0.189	Q	887	1773	2660	3547	4433	5320	6207	7093
		Vk	1.30	2.60	3.90	5.20	6.50	7.80	9.10	10.40
		Ps	0	1	3	5	8	12	16	22
		Lw(A)	24	34	40	44	47	50	52	54
630	0.247	Q	1122	2244	3367	4489	5611	6733	7855	8978
		Vk	1.30	2.50	3.80	5	6.30	7.60	8.80	10.10
		Ps	0	1	2	4	7	10	14	18
		Lw(A)	23	33	39	43	47	49	52	54



CR2 + ONE	Dimensions					
	P	Q	Z (H<300)	Z (H>=300)	x	y
	110	210	80	180	=(ØD/2)-263	=(ØD/2)-132

Electrical connection

