



Motorized circular fire dampers EI120S type CR120+ONE-T

Motorized circular fire dampers with a fire resistance of 120 Minutes. When the temperature in the damper rises above 72 °C the damper will close. When closed, the expanding material around the fireblade will assure a fire and air-tight seal against hot air and smoke. The tunnel is made out of galvanized steel. The **CR2 + ONE-T** fire dampers have a motorized operating mechanism with indication of the blade position including begin or end of range switch.

Application

- Fire compartmentation
- To close and seal off ventilation ducts in case of fire
- For air temperatures of -10°C up to temperature of fusible link
- For air with RV 0-96%
- Range of Ø355 up to Ø630 mm
- For size Ø100 upto Ø315 see type CR120

Material

- Galvanized steel

Composition

- Galvanized steel tunnel
- Fireproof blade in fibersilicate
- Intumescent strip around the valve
- Actuator ONE for all sizes
- 1. Refractory casing
- 2. Damper blade
- 3. Operating mechanism with:
 - manual rearmation option
 - blade position indicator
- 4. Sealing cold smoke
- 5. Blade bumper
- 6. Intumescent strip
- 7. Thermo-electric fuse
- 8. Rubber sealing ring

Mechanism

The spring-return actuator ONE is designed to simply operate Rf-t fire dampers of all sizes, automatically or remotely. When powered, the actuator moves the damper blade into its stand-by position. When the power is interrupted or when the temperature in the duct exceeds 72°C, the internal armed spring brings the damper blade back into its safety position. The motor can be reset manually by using a standard 9V battery. An integrated LED indicates the open or closed position of the motor. The (included) beginning and end of range switches indicate the position of the damper blade (on a controller panel).

Mounting

- To be inserted in fire resistant walls or floors according to the mounting instructions delivered with the valves
- To be connected with round air ducts
- To be electrically wired to the fire detection or building installation

Certification

- Certified according EN 1366-2
- CE-marked

Accessories

- Fire resistant plaster **BP**

Text for tender

- The fire dampers shall be of the round type with a fire resistance of 120 Minutes, certified according to EN 13501-3. They will consist of a galvanized steel tunnel and fireproof valve. The control mechanism will be automatically operated by means of an actuator and shall have a blade position indicator
- **SIG type CR2 + ONE-T**

Order example

- **CR2 + ONE-T, 315**

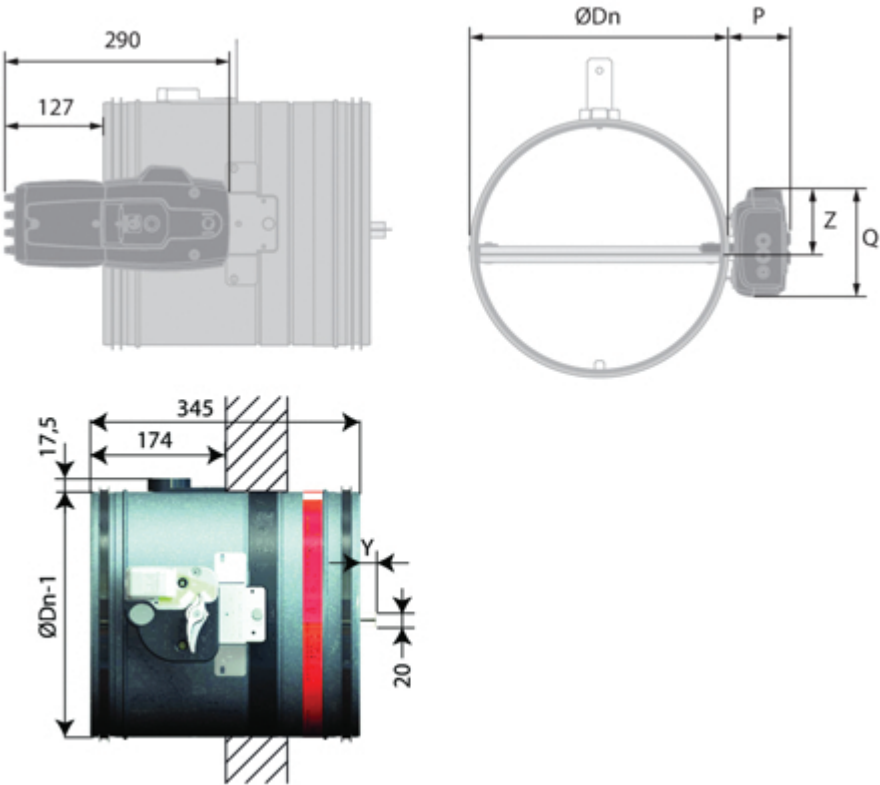
Explanation

ONE-T= Actuator with thermostatic fuse

315 = Connection diameter

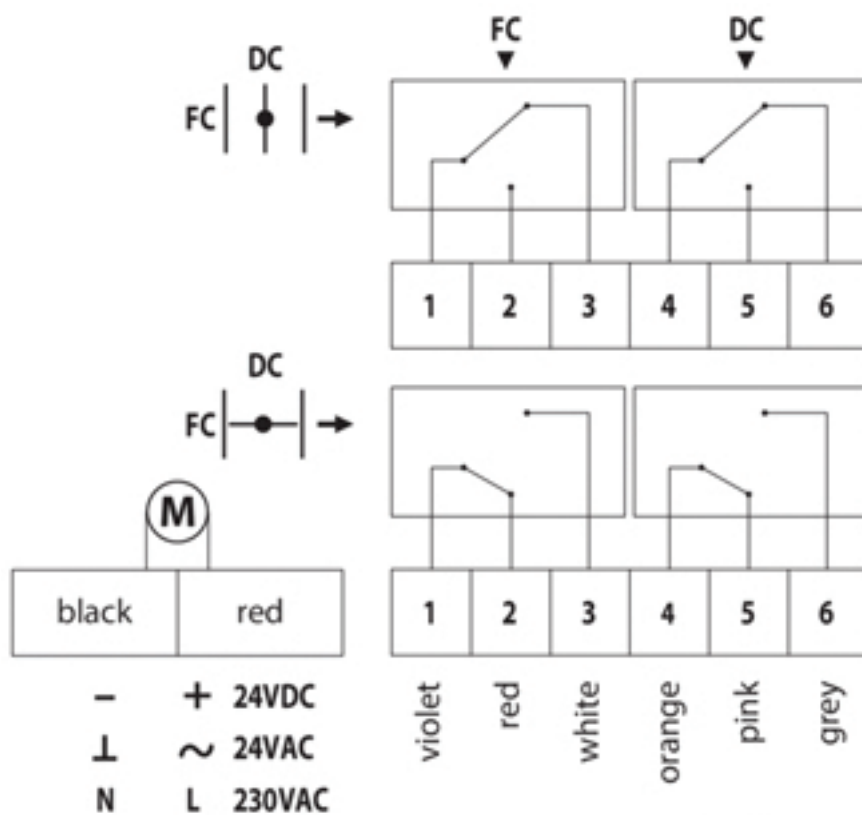
Quick selection							
Dia	v	3	4	5	6	7	8
100	Q	85	113	141	170	198	226
	Vk	5	6.7	8.3	10	11.7	13.4
	Ps	5	8	13	19	26	33
	Lw(A)	41	45	47	50	52	54
125	Q	132	177	221	265	309	353
	Vk	4.5	6	7.5	9	10.5	12
	Ps	4	7	11	16	21	28
	Lw(A)	38	43	46	48	51	52
160	Q	217	289	362	434	506	579
	Vk	4	5.4	6.7	8.1	9.4	10.8
	Ps	3	5	8	12	16	22
	Lw(A)	37	41	44	46	49	51
200	Q	339	452	565	678	791	904
	Vk	3.8	5.1	6.3	7.6	8.9	10.1
	Ps	2	4	6	9	12	16
	Lw(A)	37	41	43	46	48	50
250	Q	530	707	883	1060	1236	1413
	Vk	3.6	4.8	6	7.2	8.4	9.6
	Ps	2	3	4	6	9	11
	Lw(A)	36	40	43	45	47	49
315	Q	841	1122	1402	1682	1963	2243
	Vk	3.5	4.6	5.8	7	8.1	9.3
	Ps	1	2	3	4	5	7
	Lw(A)	35	39	43	44	46	47

Fire dampers



	Dimensions		
	P [mm]	Q [mm]	Z [mm]
CR120 + ONE-T	80	136	75
Pentru Dn 315 mm, lamela depășește corpul clapetei cu y=20 mm			

Electrical connection



DC : Switch open position fire damper

FC : Switch closed position fire damper