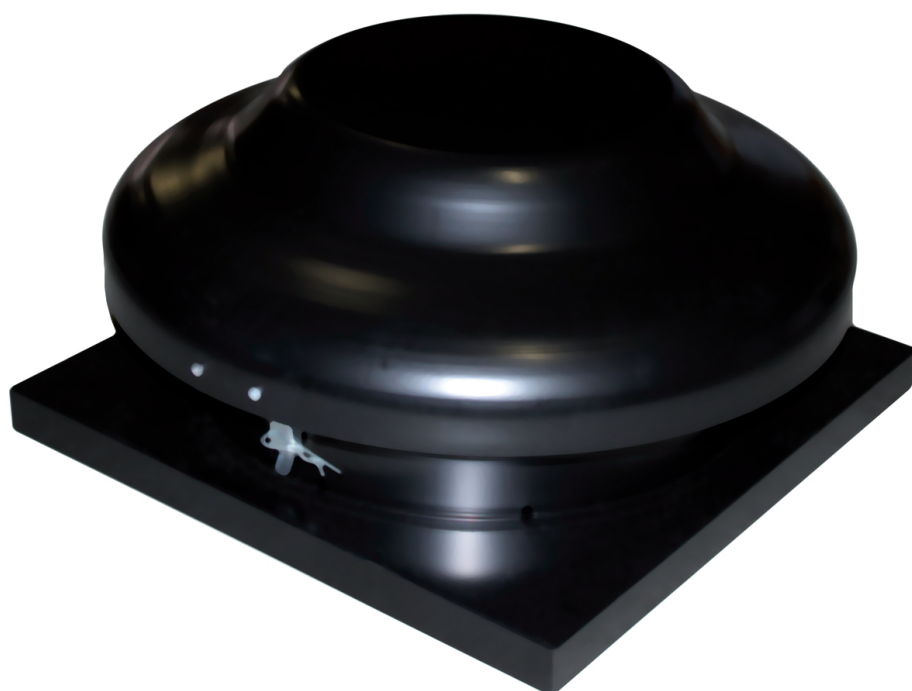


- ATC Roof fans
- Horizontal discharge
- Motor in air stream
- IP44



Roof exhaust units type TKS

Roof exhaust unit with horizontal discharge

Application

- **TKS** fans are used for the extraction of clean air of small and medium sized rooms

Composition

- Weather cap and base made of galvanized sheet steel
- Finish: powder coated RAL 9005
- Backward curved impeller, statically and dynamically balanced, blades made of galvanized steel
- External, single phase rotor motor with integrated thermal protection
- Voltage controllable
- Rectangular connecting base
- Maintenance-free, long-life ball bearings
- Fans are manufactured with asynchronous motor
- Protection class IP44, insulation class B

Accessories

- Roof socket type **RC-I**
- Sound attenuating roof socket type **RAC-I**
- Electronic controller type **MTY-1**
- Transformer controller **BTRN**

Text for tender

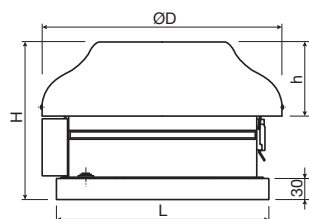
- The air shall be extracted by means of a roof fan with horizontal discharge with weather cap and base in galvanized sheet steel and polyester paint finish. The motor-fan assembly shall be separate from the weather cap and movable for easy maintenance
- **ATC** type **TKS**

Order example

- **TKS 300B + MTY1**

TKS 300B = fan

MTY1 = speed controller



| | Dimensions | | | |
|----------|------------|--------|--------|--------|
| | ØD [mm] | H [mm] | h [mm] | L [mm] |
| TKS 300B | 344 | 234 | 107 | 305 |
| TKS 300C | 450 | 241 | 109 | 405 |
| TKS 400B | 450 | 245 | 109 | 405 |
| TKS 400C | 450 | 315 | 109 | 405 |